




Seyed Shokouhzadeh
Executive Director

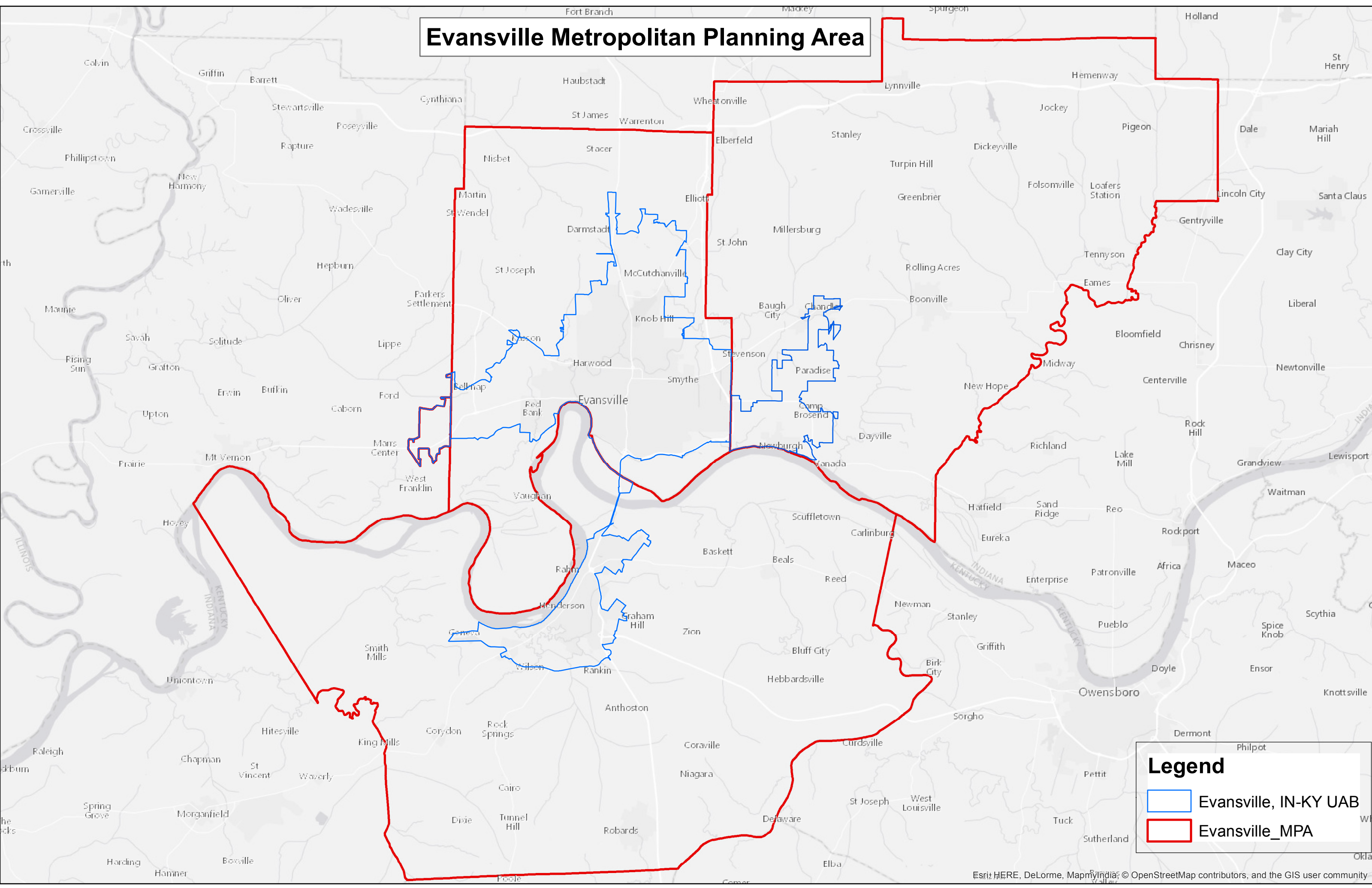
TO: Policy Committee Members
FROM: Seyed Shokouhzadeh, Executive Director 
Ref: Metropolitan Planning Area and Functional Classification System
DATE: August 25, 2016

The Evansville MPO in consultation with the LPAs and INDOT finalized the Evansville Metropolitan Planning Area and the Functional Classification System for Vanderburgh and Warrick counties within the MPA. In this regard, we ask your approval of the attached maps for the MPA and the Functional Classification System for Vanderburgh and Warrick counties.

If you have any questions please contact Vishu Lingala at (812) 436 7836 or vlingala@evansvillempo.com.

SS/LVG

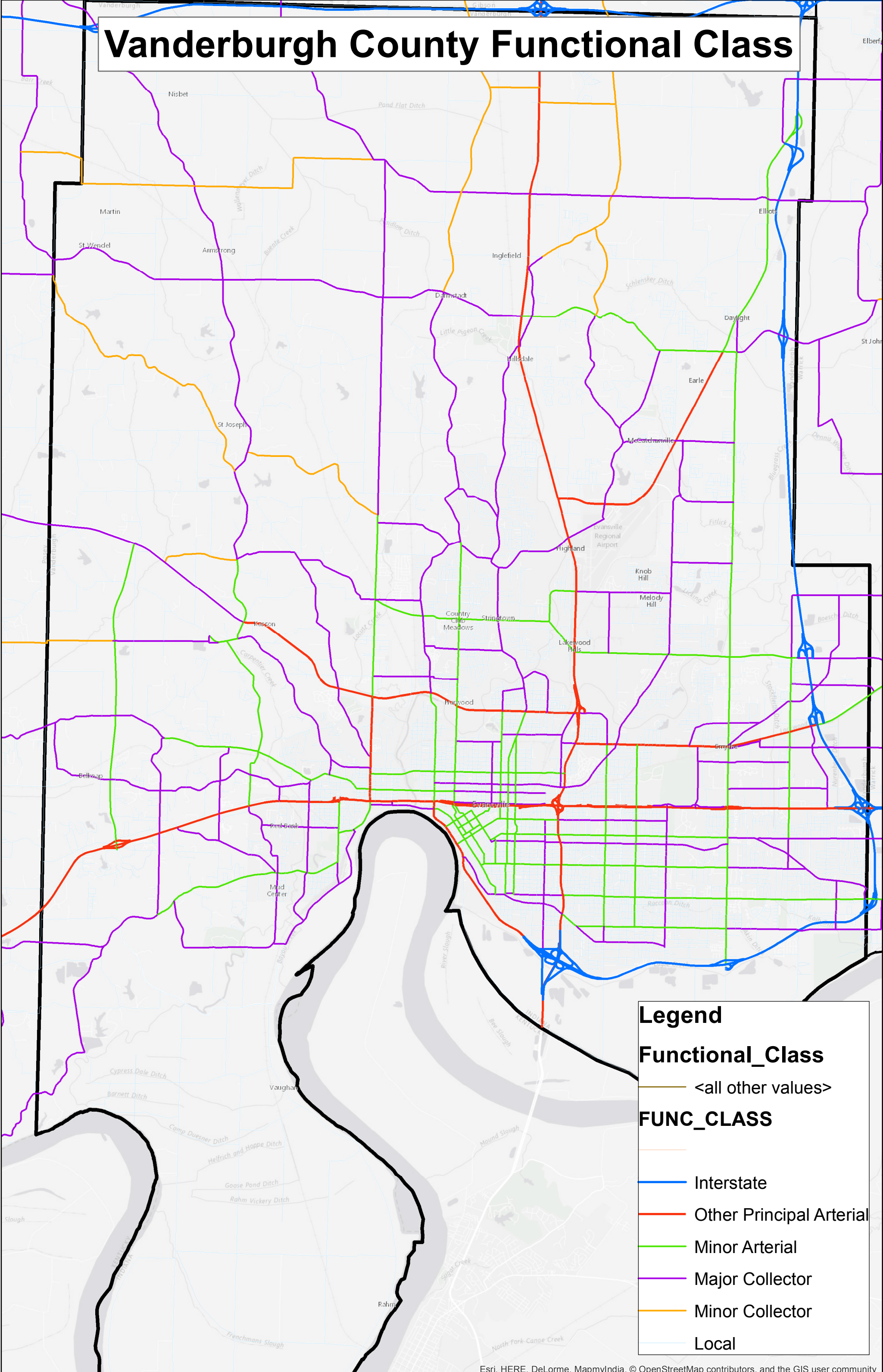
Evansville Metropolitan Planning Area



Legend

- Evansville, IN-KY UAB
- Evansville_MPA

Vanderburgh County Functional Class



Legend

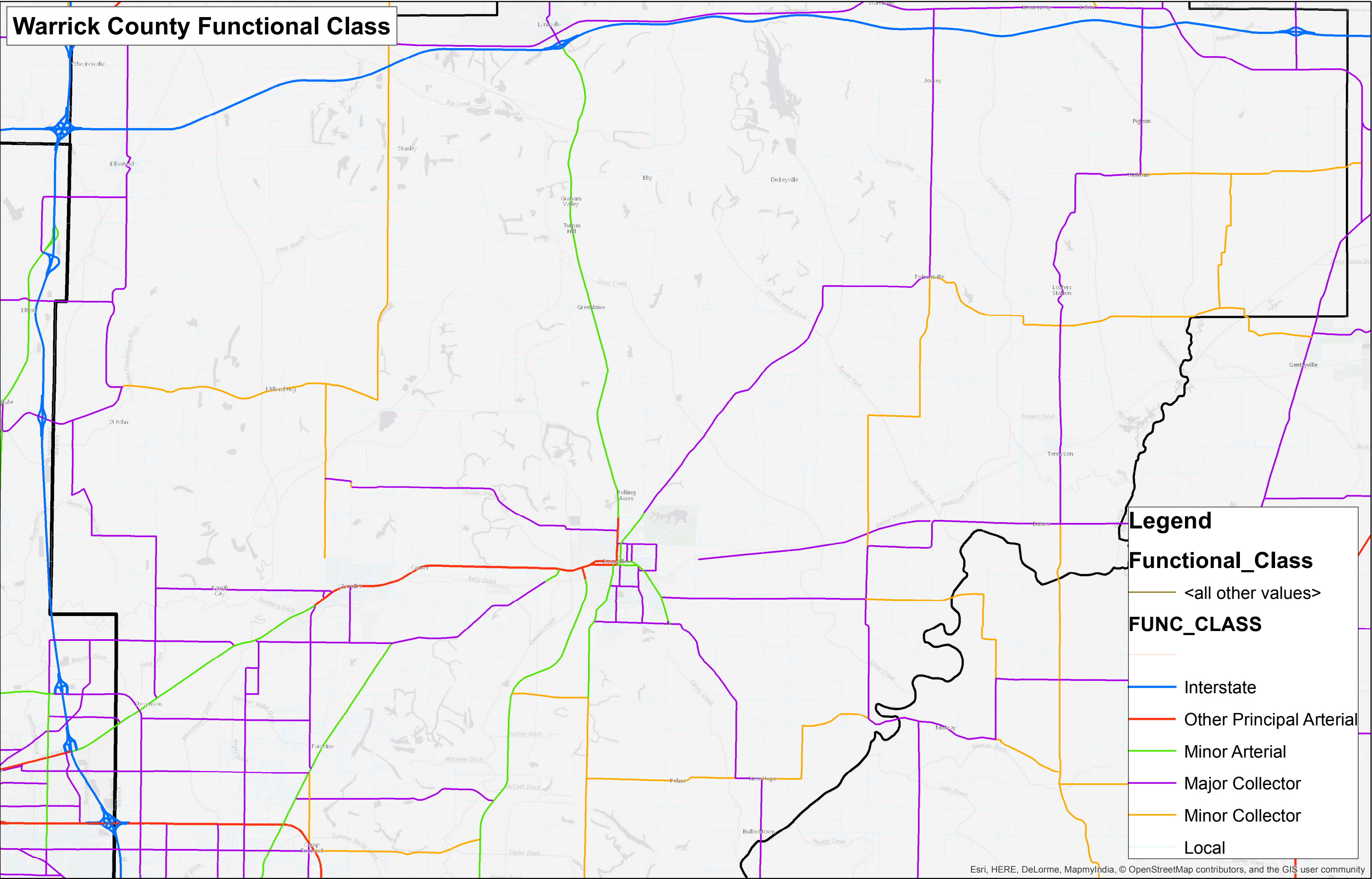
Functional_Class

<all other values>

FUNC_CLASS

- Interstate
- Other Principal Arterial
- Minor Arterial
- Major Collector
- Minor Collector
- Local

Warrick County Functional Class



Legend

Functional_Class

- <all other values>
- Interstate
- Other Principal Arterial
- Minor Arterial
- Major Collector
- Minor Collector
- Local

FUNC_CLASS